




# Resolving The Mystery of Accidental Deaths And Diseases.

AGI (Biomedical Scientist) is believed to be a ameliorate savior than a Normal Scientist when it comes to forecasting the health probabilities using general machine intelligence.



# CHALLENGES

The client requires to identify the plausible impulsive health risks. Few of the highlighted Issues :



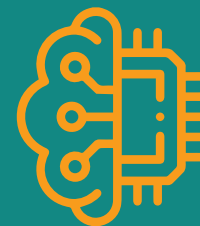
- Lack of accurate and precise patient's data.

- Need of Generalized model which can be adapted as per the need of different patients.



# SOLUTIONS

Experts from philosophy, neurosciences, and mathematics integrated to form the AGI Engineering model.



Network of networks are created to match the working model of the human brain.

Machine consciousness algorithms are proposed to manage massive datasets for studying patients at the quantum level.



# IMPACTS



The proposed machine consciousness system is an attempt to achieve human-level thinking.



Foretelling risks helps patients acquiring timely treatment and hence a savior.

For more information visit: [www.cirglabs.com](http://www.cirglabs.com)

© 2021 CiRG Labs, New Delhi, India. All Rights Reserved. CiRG Labs believes the information in this document is accurate as of its publication date; such information is subject to change without notice. CiRG Labs acknowledges the proprietary rights of other companies to the trademarks, product names and such other intellectual property rights mentioned in this document. Except as expressly permitted, neither this documentation nor any part of it may be reproduced, stored in a retrieval system, or transmitted in any form or by any means, electronic, mechanical, printing, photocopying, recording or otherwise, without the prior permission of CiRG Labs and/ or any named intellectual property rights holders under this document.

[www.cirglabs.com](http://www.cirglabs.com)

